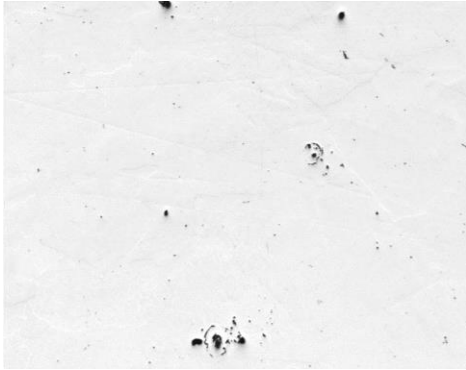
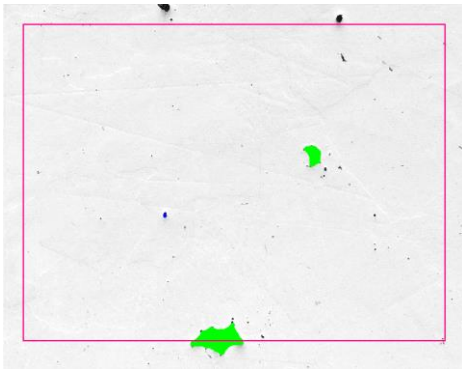


## AL<sub>2</sub>O<sub>3</sub> CLUSTERS AND ARGON-CAVITIES RATING



**Figure 1:** Original image (25X).



**Figure 2:** Al<sub>2</sub>O<sub>3</sub> clusters are binarized into green bitplane. Clusters with area smaller than 10000 μm<sup>2</sup> are transferred into the blue bitplane.

### Sample Description

One slab sample.

### Purpose of Analysis

Demonstrate the ability of the Clemex Vision image analysis system to detect and measure clusters of Al<sub>2</sub>O<sub>3</sub> particles and argon-cavities.

### Procedure

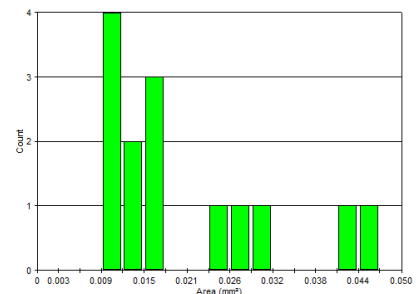
A Guard Frame was used to prevent objects bisected by the edges of the field of view to be counted twice. The contrast of original image was improved by a Delineate filter. Al<sub>2</sub>O<sub>3</sub> clusters were binarized into green bitplane. A series of binary operations reconnected Al<sub>2</sub>O<sub>3</sub> clusters and isolated argon-cavities. The objects smaller than 10000 μm<sup>2</sup> were eliminated from the measurements and transferred into the blue bitplane. Object measurements were done on each feature.

### Equipment

**Image Analysis System:** Clemex Vision PE  
**Microscope:** Nikon Optiphot-2 with reflected light  
**Camera:** Sony XC 77CE 1:1, B/W  
**Stage:** Motorized marzhauser EK8B-S1 (100X75 mm) with auto focus drive  
**Magnification:** 25X

### Results

	Area of Clusters > 10000 μm <sup>2</sup> (mm <sup>2</sup> )	Area of Ar-Cavities > 10000 μm <sup>2</sup> (mm <sup>2</sup> )	Area of Ar-Cavities < 10000 μm <sup>2</sup> (mm <sup>2</sup> )
<b>Minimum</b>	0.010	0.012	0.003
<b>Maximum</b>	0.046	0.019	0.009
<b>Average</b>	0.021	0.016	0.007
<b>Standard Deviation</b>	0.012	0.005	0.002
<b>Count</b>	14	2	5



**Figure 3:** Distribution of the area measurement of Al<sub>2</sub>O<sub>3</sub> clusters that are bigger than 10000 μm<sup>2</sup>