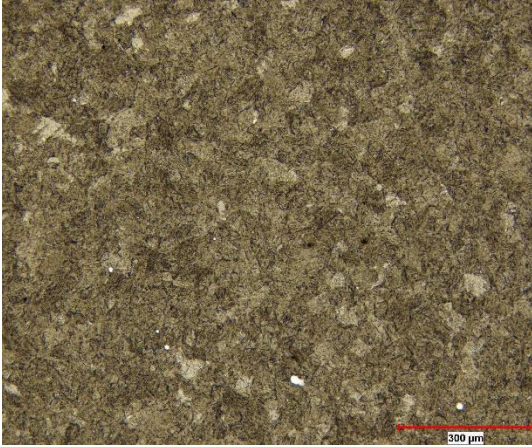
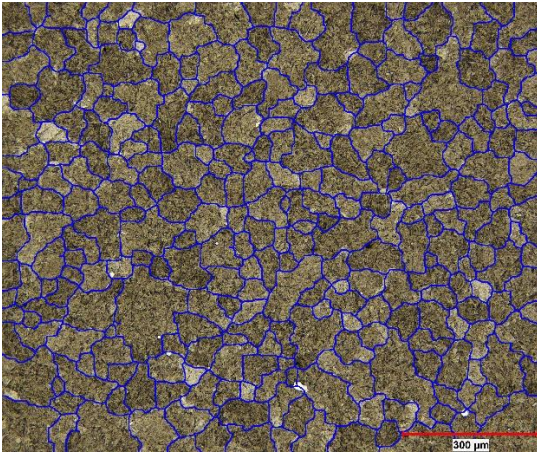


## MARTENSITIC GRAIN SIZE ANALYSIS



**Figure 1:** Original image at 100X.



**Figure 2:** Grain boundary is labeled using martensitic instruction prior to measurement.

### Sample Description

One martensitic stainless steel image is submitted for analysis.

### Purpose of Analysis

Demonstrate the ability of new martensitic tool in Clemex VisionPE to measure martensitic grains.

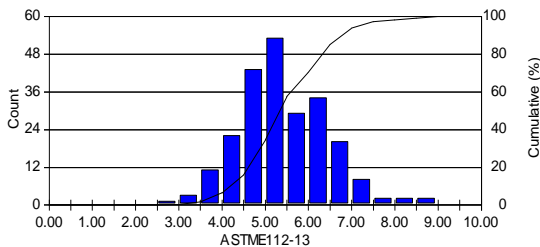
### Procedure

The martensitic grain boundary mask is constructed by martensitic instruction. From that, Vision can easily proceed with grain size measurement.

### Equipment

**Image Analysis System:** Clemex Vision PE  
**Magnification:** 100X

## Results



**Figure 3:** ASTM E112 grain size distribution.

ASTM E 112 grain size measurements are performed. Results are cumulated for automated statistics and graph generation. Final results can be printed directly from Clemex Vision. Raw data are linked to their respective objects and can be exported in Excel format.