

Cleanliness Evaluation Report

ISO 16232

SAMPLE IDENTIFICATION

Sample Name: Sample3

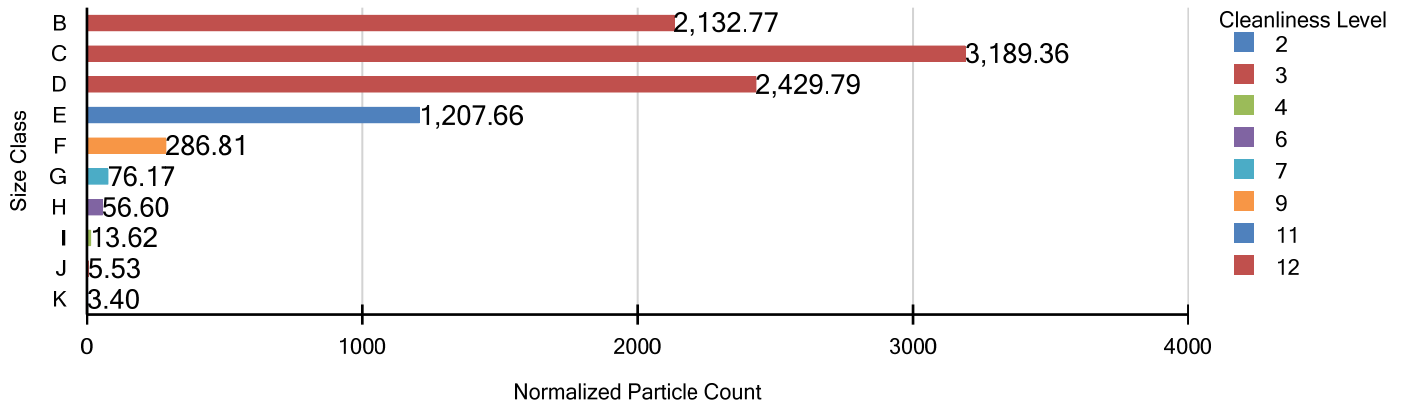
TEST PARAMETERS

Analyst:		Date:	2019-01-09 8:06:19 AM
Magnification:	50x	Filter area:	706.86 mm ²
Calibration:	1.1719 µm/pixel	Covered area:	706.86 mm ²

RESULTS & STATISTICS

CCC:	V(B12/C12/D12/E11/F9/G7/H6/I4/J3/K2)	Particle area coverage:	2.4143%
Global:	14	Total particle area:	17.0659 mm ²
Normalization method:	By Volume (235 mL)	Normalized count:	9401.702

NORMALIZED COUNT CHART



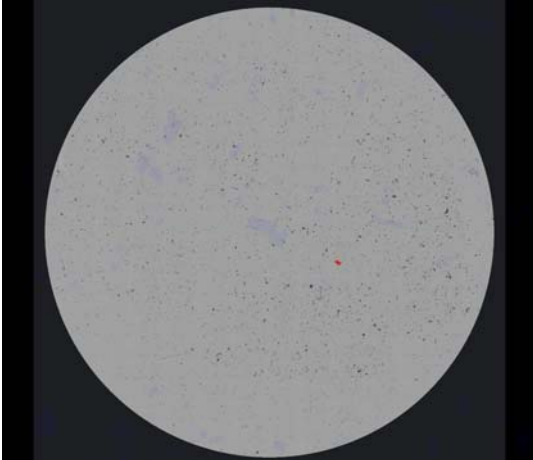
NORMALIZED COUNT GRID

Size class	Size Range	CL Level	Particle Count	Metallics	Non-Metallics	Fibers
B	5-15	12	2,132.77	24.68	2,108.09	0.00
C	15-25	12	3,189.36	31.91	3,157.45	0.00
D	25-50	12	2,429.79	96.60	2,333.19	0.00
E	50-100	11	1,207.66	103.83	1,103.83	0.00
F	100-150	9	286.81	28.09	237.02	21.70
G	150-200	7	76.17	7.66	56.60	11.91
H	200-400	6	56.60	4.26	24.26	28.09
I	400-600	4	13.62	0.43	0.43	12.77
J	600-1000	3	5.53	0.00	0.00	5.53
K	1000+	2	3.40	0.00	0.00	3.40

Cleanliness Evaluation Report

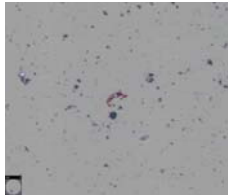
ISO 16232

SAMPLE OVERVIEW

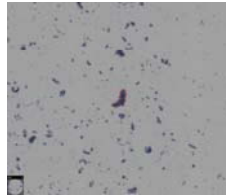


Mosaic of filter at 50x

LARGEST PARTICLES



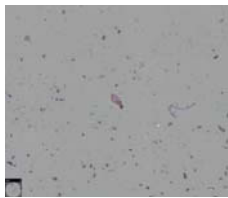
418.15 μ m Metallic



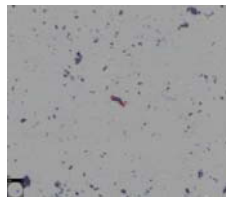
406.03 μ m Non-Metallic



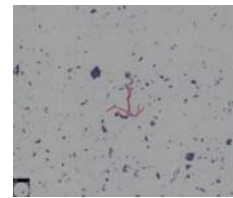
3576.46 μ m Fiber



357.36 μ m Metallic



339.08 μ m Non-Metallic



2544.72 μ m Fiber